

Write your name here

Surname

Other names

Pearson
Edexcel GCE

Centre Number

--	--	--	--	--	--

Candidate Number

--	--	--	--	--

Biology

Advanced Subsidiary

Unit 1: Lifestyle, Transport, Genes and Health

Thursday 25 May 2017 – Afternoon

Time: 1 hour 30 minutes

Paper Reference

6BI01/01

You must have:

Calculator, HB pencil, ruler

Total Marks

--

Instructions

- Use **black** ink or ball-point pen.
- **Fill in the boxes** at the top of this page with your name, centre number and candidate number.
- Answer **all** questions.
- Answer the questions in the spaces provided – *there may be more space than you need.*

Information

- The total mark for this paper is 80.
- The marks for **each** question are shown in brackets – *use this as a guide as to how much time to spend on each question.*
- Questions labelled with an **asterisk** (*) are ones where the quality of your written communication will be assessed – *you should take particular care with your spelling, punctuation and grammar, as well as the clarity of expression, on these questions.*
- Candidates may use a calculator.

Advice

- Read each question carefully before you start to answer it.
- Keep an eye on the time.
- Try to answer every question.
- Check your answers if you have time at the end.

Turn over ►

P53548A

©2017 Pearson Education Ltd.

1/1/1/



Pearson

Answer ALL questions.

Some questions must be answered with a cross . If you change your mind about an answer, put a line through the box and then mark your new answer with a cross .

- 1** Cigarette smoke contains substances that increase the risk of the formation of blood clots and of developing cardiovascular disease (CVD).
- (a) For each of the statements below, put a cross in the box that corresponds to the correct statement.
- (i) Blood clotting is needed to reduce (1)
- A** atherosclerosis
 - B** blood pressure
 - C** infection
 - D** obesity
- (ii) Platelets are (1)
- A** antibodies
 - B** antioxidants
 - C** cell fragments
 - D** enzymes
- (iii) Fibrin is (1)
- A** a soluble protein
 - B** an amino acid
 - C** an enzyme
 - D** an insoluble protein
- (iv) Thrombin is (1)
- A** a cell fragment
 - B** a fibrous protein
 - C** an enzyme
 - D** an organelle

DO NOT WRITE IN THIS AREA

DO NOT WRITE IN THIS AREA

DO NOT WRITE IN THIS AREA



DO NOT WRITE IN THIS AREA

DO NOT WRITE IN THIS AREA

DO NOT WRITE IN THIS AREA

(b) Cigarette smoke contains nicotine. Nicotine is a vasoconstrictor that reduces the diameter of some blood vessels.

(i) Using this information, explain why smoking increases the risk of developing cardiovascular disease (CVD).

(3)

.....

.....

.....

.....

.....

.....

.....

.....

.....

.....

.....

.....

.....

.....

.....

.....

.....

.....

.....

.....

.....

.....

.....

(ii) Name one type of drug that would be useful for treating a smoker at risk of developing CVD and explain how it works to prevent CVD.

(3)

Type of drug

How it works to prevent CVD

.....

.....

.....

.....

.....

.....

.....

.....

.....

.....

(Total for Question 1 = 10 marks)



2 Amylase is an enzyme that catalyses the breakdown of starch to maltose.

(a) (i) Name the type of chemical reaction catalysed by amylase.

(1)

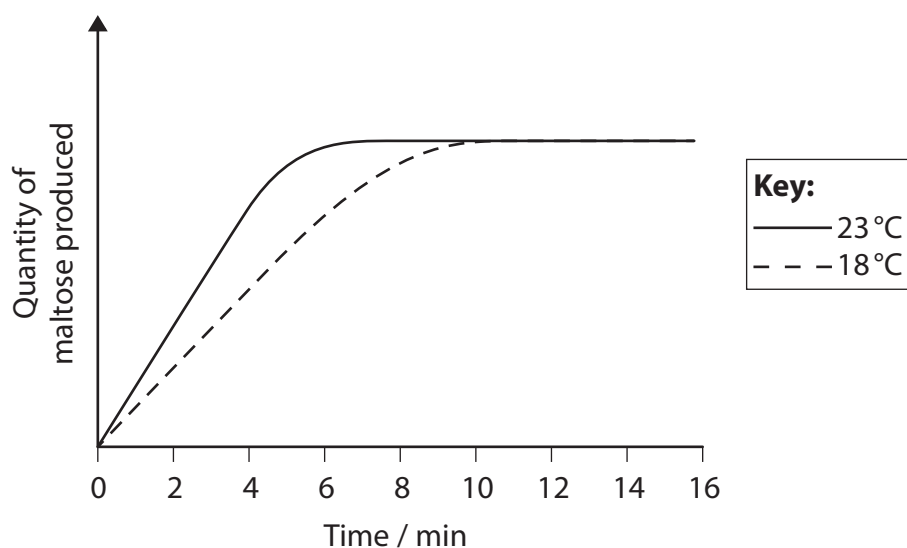
(ii) Name the bond in the starch molecule that is broken by amylase.

(1)

(b) The effect of temperature on the breakdown of starch by amylase was investigated.

The quantity of maltose produced was measured during the course of two experiments: one carried out at 18 °C and the other at 23 °C.

The graph below shows the results of this investigation.



(i) State why the quantity of maltose produced became constant in this investigation.

(1)



3 Active transport and facilitated diffusion are two ways in which some molecules can move through cell membranes.

(a) State **one** difference and **one** similarity between active transport and facilitated diffusion. (2)

Difference

.....

.....

Similarity

.....

.....

(b) Vitamin C and vitamin D are essential for human health.

Vitamin C is water-soluble. Vitamin D is lipid-soluble.

Explain how the structure of the cell surface membrane affects how each of these vitamins passes through the membrane.

(4)

Vitamin C

.....

.....

.....

.....

.....

.....

.....

Vitamin D

.....

.....

.....

.....

.....

.....

.....



DO NOT WRITE IN THIS AREA

DO NOT WRITE IN THIS AREA

DO NOT WRITE IN THIS AREA

(c) High concentrations of sodium chloride in blood plasma can damage red blood cells.

Explain the effects on red blood cells of high concentrations of sodium chloride in blood plasma.

(3)

.....

.....

.....

.....

.....

.....

.....

.....

.....

.....

.....

.....

.....

.....

.....

.....

.....

.....

.....

.....

.....

.....

(Total for Question 3 = 9 marks)



4 The mammalian lung is adapted for efficient gas exchange.

Describe how each of the following features assists in producing an efficient gaseous exchange system.

(a) The lungs are composed of many alveoli. Each alveolus has a wall 0.1 μm thick. (2)

.....

.....

.....

.....

.....

.....

(b) The alveoli are ventilated. (2)

.....

.....

.....

.....

.....

.....



(c) A dense network of capillaries covers the outside of each alveolus.

(3)

DO NOT WRITE IN THIS AREA

DO NOT WRITE IN THIS AREA

DO NOT WRITE IN THIS AREA

DO NOT WRITE IN THIS AREA

DO NOT WRITE IN THIS AREA

DO NOT WRITE IN THIS AREA

DO NOT WRITE IN THIS AREA

DO NOT WRITE IN THIS AREA

DO NOT WRITE IN THIS AREA

DO NOT WRITE IN THIS AREA

DO NOT WRITE IN THIS AREA

(Total for Question 4 = 7 marks)



DO NOT WRITE IN THIS AREA

DO NOT WRITE IN THIS AREA

DO NOT WRITE IN THIS AREA

BLANK PAGE



DO NOT WRITE IN THIS AREA

DO NOT WRITE IN THIS AREA

DO NOT WRITE IN THIS AREA

5 The molecules DNA and RNA are involved in protein synthesis.

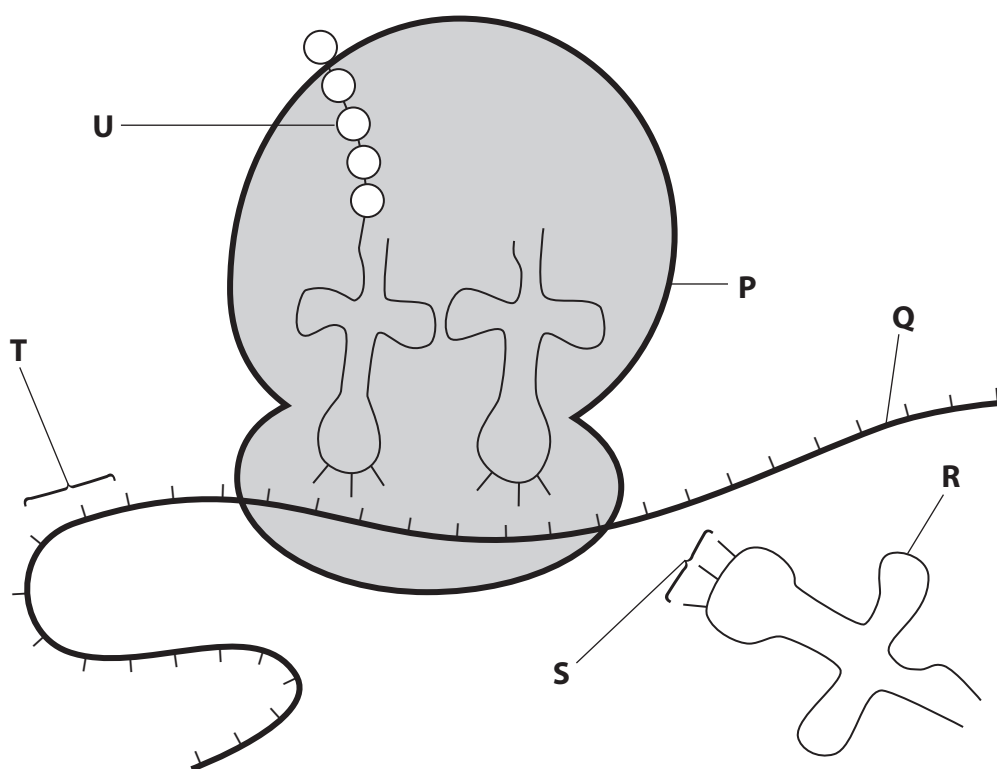
(a) (i) Name the sugar in DNA. (1)

(ii) State how many carbon atoms are present in the sugar in DNA. (1)

(iii) Name the nitrogenous base that is present in DNA but not in RNA. (1)



(b) The diagram below shows part of the process of protein synthesis.



For each of the statements below, put a cross in the box that corresponds to the correct statement.

(i) mRNA is represented on the diagram by the

(1)

- A** letter P
- B** letter Q
- C** letter R
- D** letter S

(ii) The anticodon is represented on the diagram by the

(1)

- A** letter Q
- B** letter R
- C** letter S
- D** letter T



- 6 Haemoglobin contains four polypeptide chains, two α chains and two β chains. Haemoglobin has the amino acid glutamic acid at position 6 in each β chain.

The R group for glutamic acid is $-\text{CH}_2-\text{CH}_2-\text{COOH}$

- (a) Draw a structural diagram of the amino acid glutamic acid.

(3)

- (b) Sickle-cell haemoglobin is another form of haemoglobin that causes sickle-cell anaemia. Sickle-cell haemoglobin has the amino acid valine at position 6 in each β chain.

The R group for valine is $-\text{CH}-(\text{CH}_3)_2$

The diagram below shows the first seven amino acids in the β chains of haemoglobin and sickle-cell haemoglobin.

Haemoglobin β chain



Sickle-cell haemoglobin β chain



- (i) Using the information given, suggest why sickle-cell anaemia could be caused by a mutation in a single DNA base.

(2)

.....

.....

.....

.....

.....

.....

.....

.....

.....

.....



(ii) Explain why the change in the amino acid at position 6 in the β chains changes the properties of the haemoglobin molecule.

(3)

.....

.....

.....

.....

.....

.....

.....

.....

.....

.....

.....

.....

.....

.....

.....

.....

.....

.....

.....

.....

.....

.....

(c) Sickle-cell haemoglobin can cause red blood cells to become sickle-shaped.

This can cause blockages in capillaries that result in pain in muscle tissue.

(i) Suggest why capillaries, rather than arteries, are more likely to be blocked in a person with sickle-cell anaemia.

(1)

.....

.....

.....

DO NOT WRITE IN THIS AREA

DO NOT WRITE IN THIS AREA

DO NOT WRITE IN THIS AREA



(ii) Suggest why a person with sickle-cell anaemia experiences pain in muscle tissues. (3)

.....

.....

.....

.....

.....

.....

.....

.....

.....

.....

.....

.....

.....

.....

.....

.....

.....

.....

.....

.....

.....

.....

.....

(Total for Question 6 = 12 marks)

DO NOT WRITE IN THIS AREA

DO NOT WRITE IN THIS AREA

DO NOT WRITE IN THIS AREA



DO NOT WRITE IN THIS AREA

DO NOT WRITE IN THIS AREA

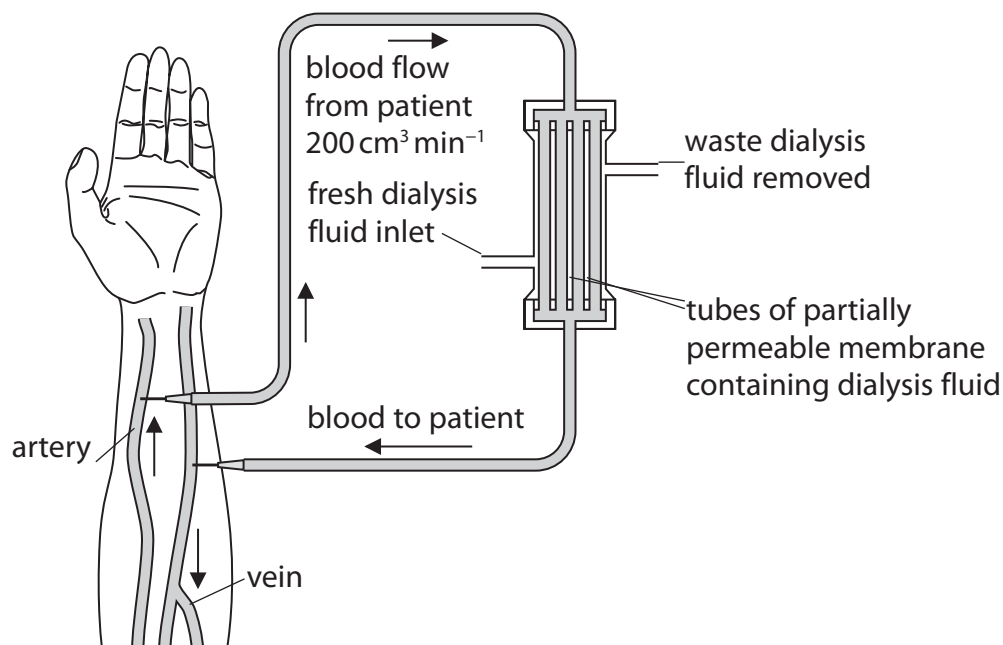
DO NOT WRITE IN THIS AREA

7 Patients with kidney failure may be treated with a dialysis machine.

This removes excess water and solutes, such as urea, from their blood.

A dialysis machine includes a partially permeable membrane and dialysis fluid. This fluid consists of water with controlled concentrations of salts and glucose.

(a) The diagram below shows a dialysis machine in use.



(i) The rate of blood flow through the dialysis machine is $200 \text{ cm}^3 \text{ min}^{-1}$.

Calculate how long it would take this dialysis machine to process 5 dm^3 of blood.

Show your working.

(2)

.....minutes



(ii) Name the process that removes urea from the blood of the patient during dialysis. (1)

(iii) Suggest why fresh dialysis fluid is added and waste dialysis fluid is removed during this procedure. (2)

DO NOT WRITE IN THIS AREA

DO NOT WRITE IN THIS AREA

DO NOT WRITE IN THIS AREA



DO NOT WRITE IN THIS AREA

DO NOT WRITE IN THIS AREA

DO NOT WRITE IN THIS AREA

(b) Patients with kidney failure often have raised lipid levels in their blood.

Explain why raised lipid levels in the blood may increase the risk of developing cardiovascular disease (CVD) for these patients.

(4)

Area with horizontal dotted lines for writing the answer.

(Total for Question 7 = 9 marks)



- 8 The recommended daily amount of nutrients required by a person depends on a number of factors.

The table below shows some of the recommended daily mean energy requirements for different people.

Gender	Age range / years	Activity level	Mean energy requirement /MJ per day
Male	0 to 1	Moderately active	3.3
Male	3 to 4	Moderately active	6.5
Male	9 to 11	Moderately active	9.5
Male	15 to 17	Moderately active	12.0
Male	18 to 34	Moderately active	12.0
Male	18 to 34	Very active	14.0
Male	35 to 64	Moderately active	11.5
Male	35 to 64	Very active	14.0
Male	65 to 74	Moderately active	10.0
Male	75 and over	Moderately active	9.0

Gender	Age range / years	Activity level	Mean energy requirement /MJ per day
Female	0 to 1	Moderately active	3.0
Female	3 to 4	Moderately active	6.3
Female	9 to 11	Moderately active	8.5
Female	15 to 17	Moderately active	9.0
Female	18 to 54	Moderately active	9.0
Female	18 to 54	Very active	10.5
Female	55 to 74	Moderately active	8.0
Female	75 and over	Moderately active	7.0



(c) Using the information from the tables, suggest the consequences for moderately active children, aged 9 to 11, who have an energy intake of 10.0 MJ per day.

(4)

.....

.....

.....

.....

.....

.....

.....

.....

.....

.....

.....

.....

.....

.....

.....

.....

.....

.....

.....

.....

.....

.....

.....

(Total for Question 8 = 11 marks)

TOTAL FOR PAPER = 80 MARKS

DO NOT WRITE IN THIS AREA

DO NOT WRITE IN THIS AREA

DO NOT WRITE IN THIS AREA



DO NOT WRITE IN THIS AREA

DO NOT WRITE IN THIS AREA

DO NOT WRITE IN THIS AREA

BLANK PAGE



DO NOT WRITE IN THIS AREA

DO NOT WRITE IN THIS AREA

DO NOT WRITE IN THIS AREA

BLANK PAGE

